



**European Heritage Volunteers  
Project 'Archaeological  
Excavation of the Remains of a  
Wooden Fortress'**

Ivanić-Grad, Croatia 2023



## Who are we?

- Participants and representatives of European Heritage Volunteers
- Members of 'Friends of Heritage'
- Professionals, students and enthusiasts of cultural heritage
- From Croatia, Spain, Australia, USA, Poland and Italy



# The Site “IVG PARK”

- Location of wooden fortress of Ivanic-Grad
- Based on blueprints, especially of Alexander Pasqualini from 1597-98
  - Surrounded by a moat filled with water from the Lonja
  - Square shape and corners fortified by bastions
  - Included a wooden chapel with stone foundation of St John Capistrano (**Trench 1** Location)
- Previous finds identified but no formal archaeological excavation conducted (until now!)
- Moats filled in from 1827 onwards, later levelled for the park and school
  - A known level of ~1.5m of fill material

## Aims and Objectives

- 
- A photograph of an archaeological excavation site. Several people are working in a long, narrow trench. One person is kneeling and using a shovel, another is standing and observing, and a third is kneeling in the foreground. A red and white striped caution tape runs across the site. In the background, there are trees and a multi-story building.
- Professional Development
  - Networking
  - Cultural Exchange
  - Knowledge Sharing
  - Gaining Experience
  - Define occupational layers of Ivanić-Grad Fortress
  - Particular interest in period prior to 15th C.
  - Conduct first archaeological excavations in the city

# Area S2 Overview

- Delimitation of the area (3x3m)
- Opening the trench with the excavator
- Digging until 120cm
- Flood and hedgehog
- Sondage (50 cm)



- Sterile soil
- Few aleatory finds (ceramics, recent glass)





Photos of S2  
during the  
delineation and  
the excavation  
of the first layer

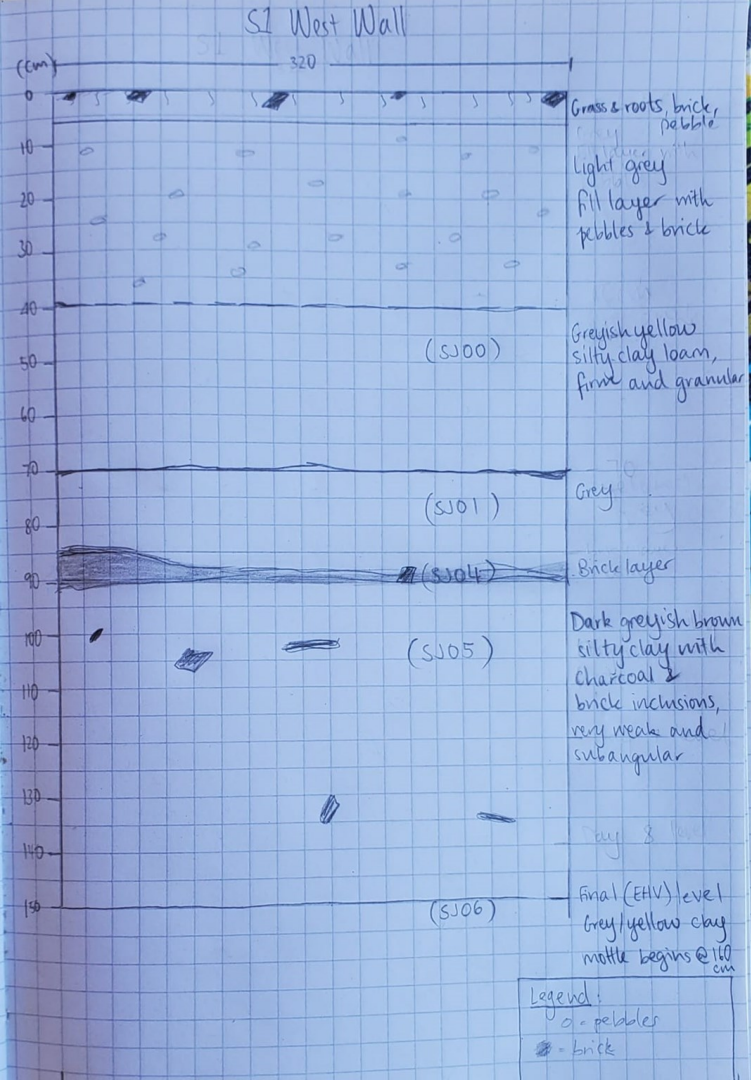


# Trench S1 Overview

- Measuring of the area - 3x3m
- Opening of S1 (cc. 85 cm depth)
- Digging - until SJ06 (the last documented layer)
- Cleaning the layers and documenting them
- Cleaning the profiles
- Hole found in the SE corner
- Sondage in the SE part



# The stratigraphic layers of trench S1 (drawn by Shari Bone)



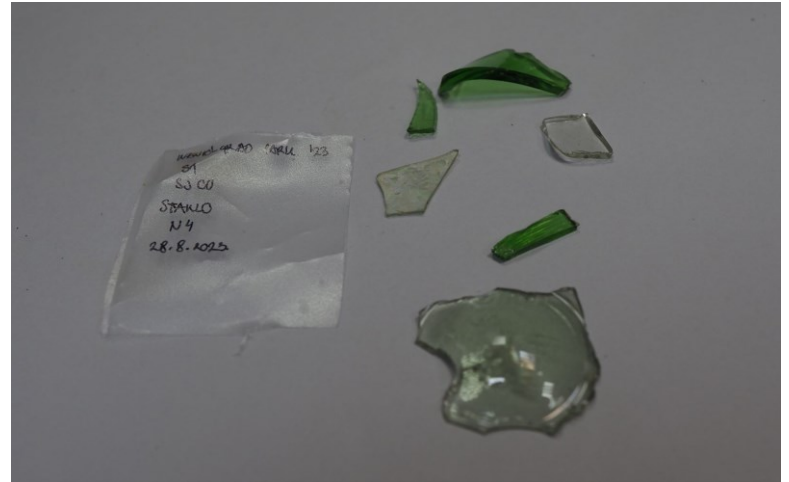




Photos of the sondage of trench S1, its cleaned profile and the hole in the SE corner

# Finds Processing

- Finds are divided in different bags based on material
- Special finds are stored separately
- Each bag needs to have a signature stating:
  - Location and year of excavation
  - Trench
  - Stratigraphic unit
  - Material
  - Number assigned to the bag
  - Date





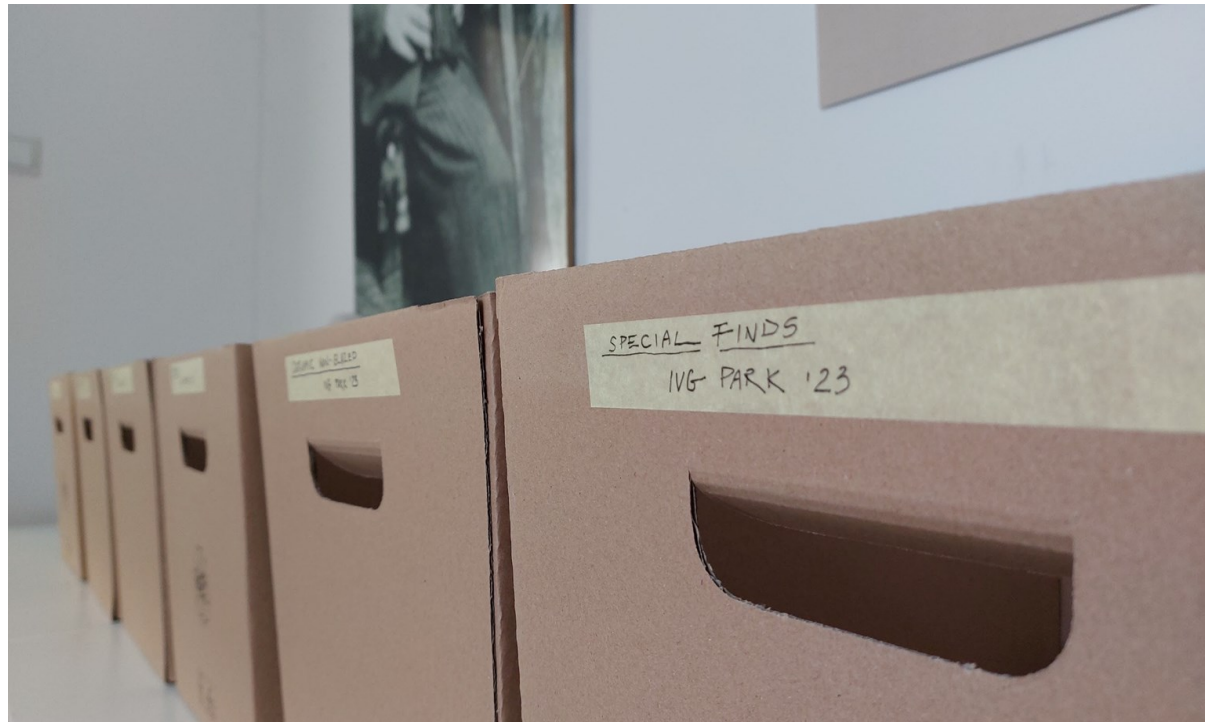
- Cleaning of the finds (except metal ones)
- Labeling ceramics and glass finds
- Separating glazed ceramic from non-glazed one
- Identifying ceramic finds that help date the layer
- Storing finds in different bags for future analysis



# S1 Finds Overview

The following categories:

- Special finds
- Glass
- Glazed ceramic
- Non-glazed ceramic
- Bones
- Metal
- Bricks



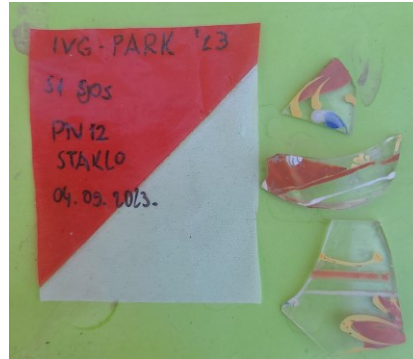
## S1 Finds Overview





# Special Finds

- Selected from our finds for significance of their time period
- Include pieces of metal, and fragments of ceramics and glass



## *Special* Special Finds

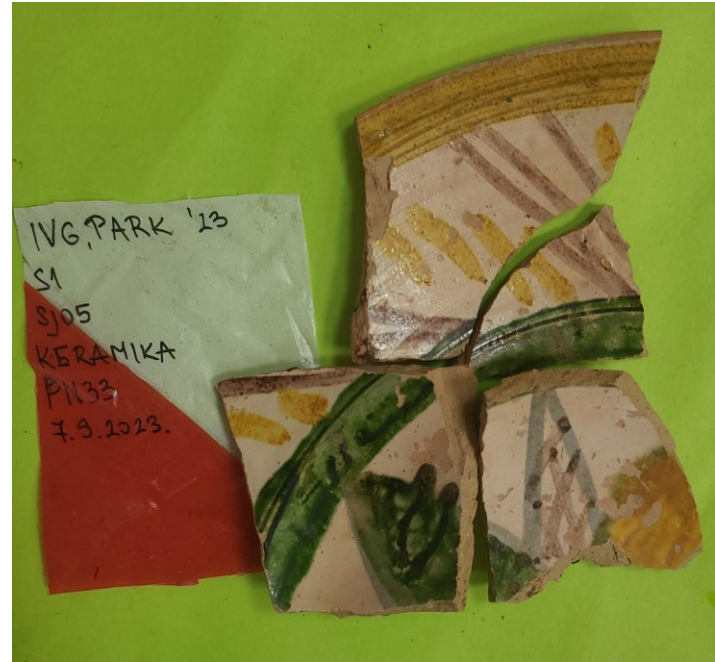
- Found on 5.9.2023
- Ceramic fragment
- Green glaze
- Support for a pot, dating to the 15th-16th Century





# *Special* Special Finds

- Found on 7.9.2023
- Ceramic fragments
- Glazed, decorated tableware
- Copy of popular design for the period



# *Special* Special Finds

- Found at various stages of excavation
- Ceramic fragments
- Green glaze
- Part of a pećnjak /  
Medieval fireplace





# *Special* Special Finds

- Found 4.9.2023
- Ceramic fragment
- Unglazed
- Double headed eagle—  
possible Austro-Hungarian  
coat of arms, or example  
of earliest crest of Ivanić  
Grad







**Hvala!**