

European Heritage Volunteers  
Ivanić-Grad, Croatia, 2024

# Archeological Excavations of the Remains of a Wooden Fortress



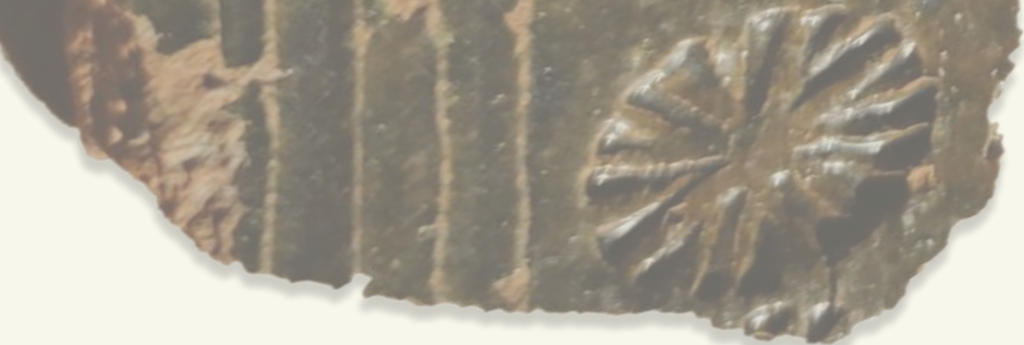


# Who Are We?

- Participants of the project organised by **European Heritage Volunteers** in collaboration with **Prijatelji Baštine – Amici Hereditatis Ivanić-Grad** and **Ivanić-Grad City Museum**
- Professionals, students, and enthusiasts of cultural heritage
- From Croatia, Canada, China, Indonesia, Serbia, India, Spain and the United Kingdom

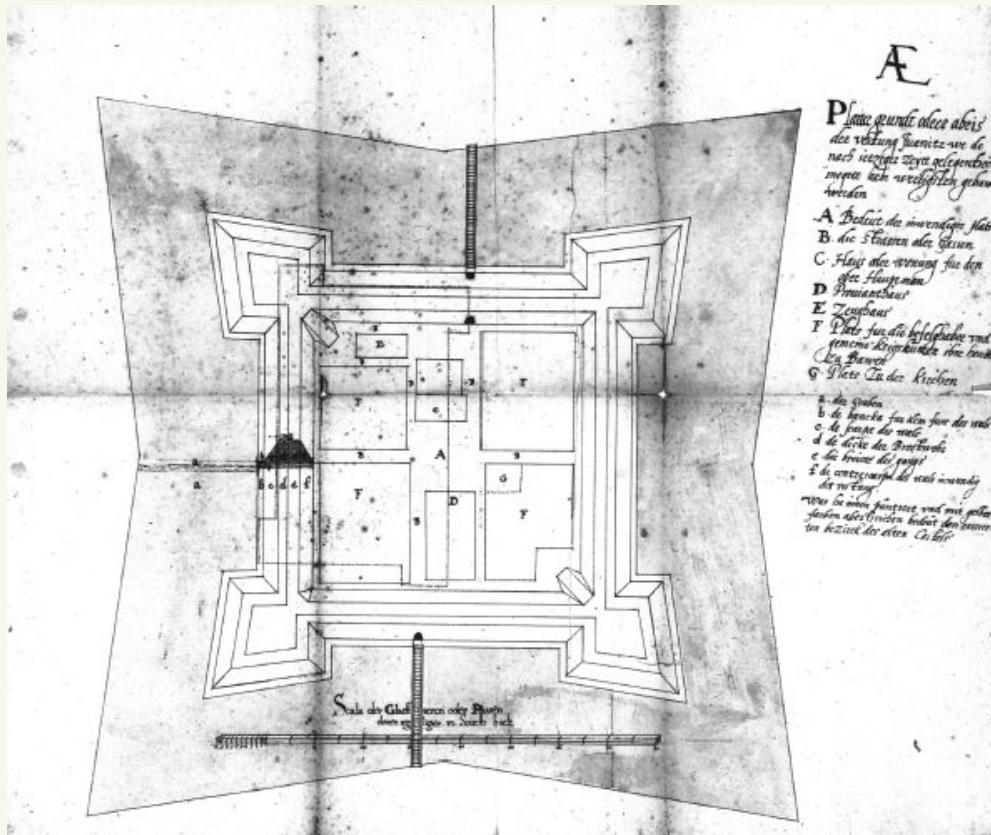






# The Site: Ivanić-Grad Park

- Location of a wooden fortress
- Based on blueprints dated from 1598
  - Fortress surrounded by a moat filled by the Lonja river
  - Square shape and corners fortified by bastions
- Second year of excavation at the site



Blueprint of Ivanić-Grad Fortress by Alexander Pasqualini, 1598.





# Objectives of European Heritage Volunteers

- Professional development
- Networking
- Cultural exchange
- Gaining experience in field work





# Aims of the Project

- Search for evidence of what happened in the fortress
- Find the remains of a wooden church
- Define occupational layers of Ivanić-Grad fortress
- Continue work begun during 2023 European Heritage Volunteers excavation





# The Set-Up

- Tour with Rosana Škrgulja (Director, Muzej Ivanić-Grada)
  - History of Ivanić-Grad and Croatia
- Technical briefing
  - Importance of documentation and signs
  - What to expect
- The trench
  - Location: based on the study of old map and general accessibility
  - Excavator dug out the top layers
  - Participants and instructors levelled the surface and cleaned the profiles
- Measurements and identification of the cardinal north





# Archaeological Tools and Techniques

## Tools

- Shovels, buckets
- Mattocks
- Japanese Hoes

## Single Context Archaeology

- Stratigraphic Layers
- Understanding the context of finds
- Clean profiles





# Stratigraphic Layers Explored

- Initial layer 20  
(removed by  
excavator)
- Grey mix layer 21
- Grey/orange layer 25  
(where we stopped)



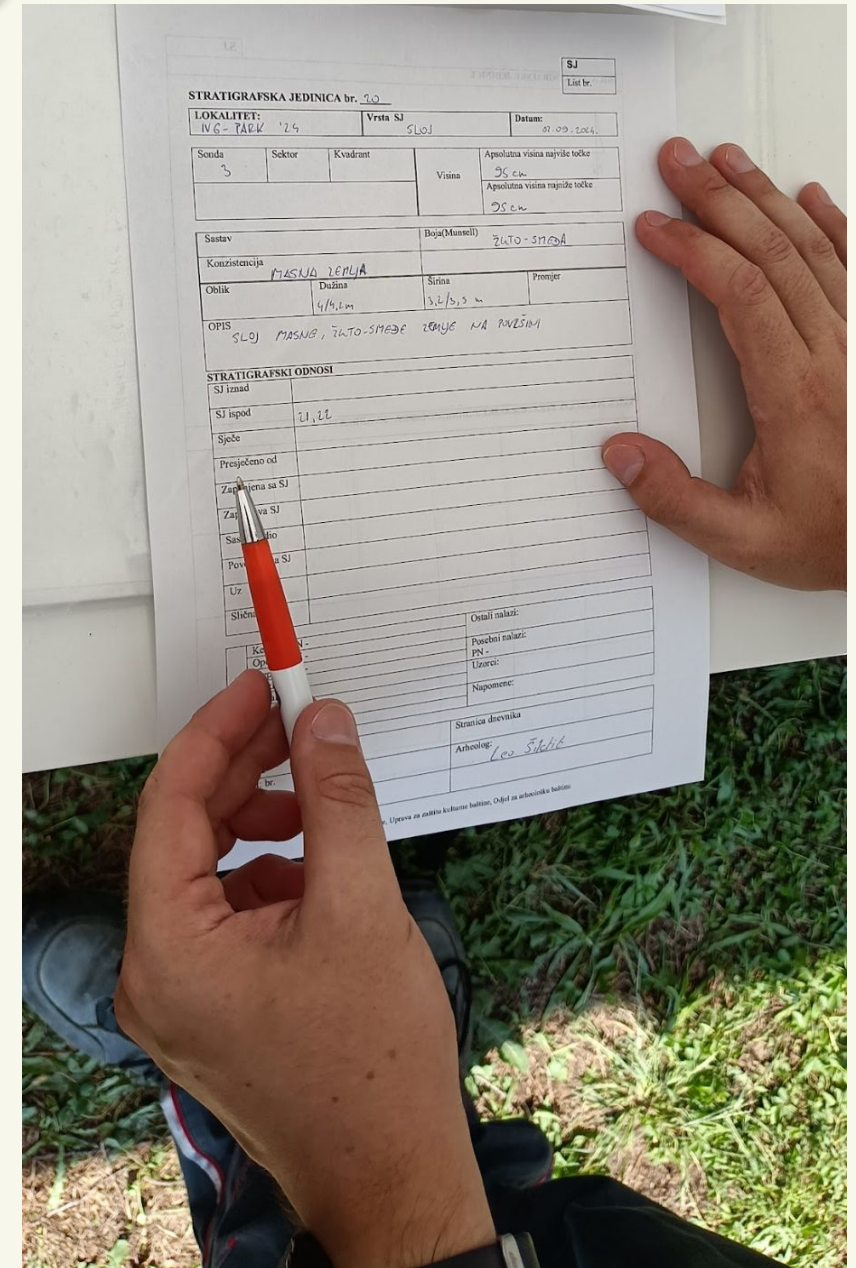
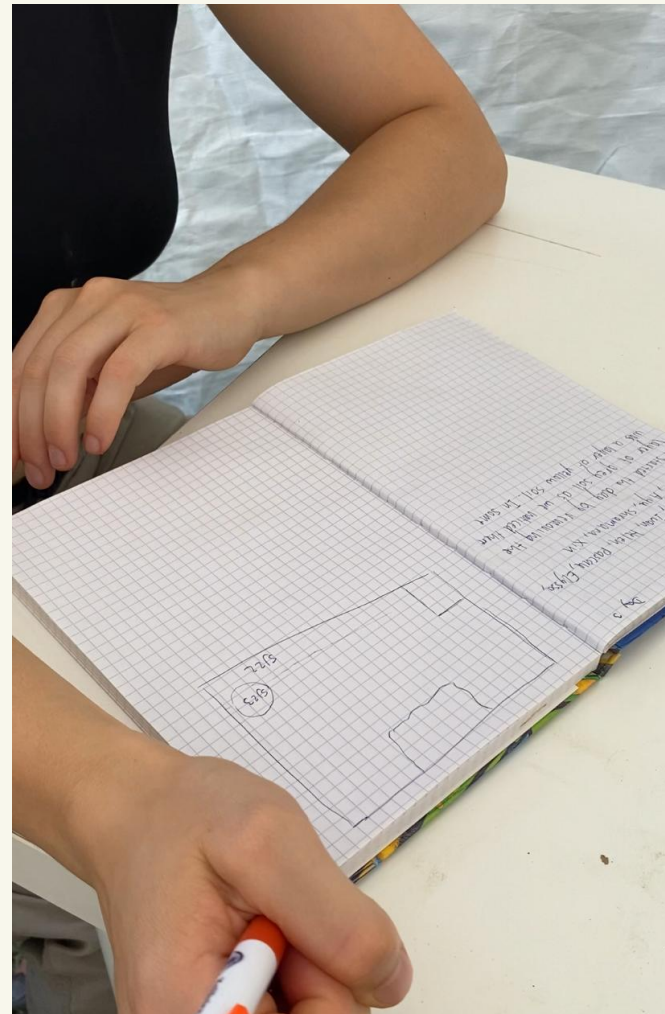
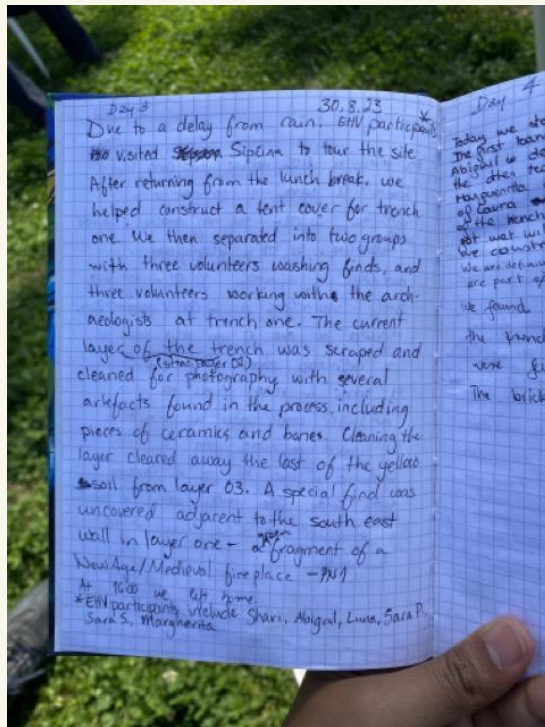
- Pit edge and contents  
layers 23 and 24

- Yellow layer 22



# Excavation Records

- Dig diary
- Find labels
- Description of each layer





# Post-Excavation Process

## Categorisation and Sorting

- Findings were grouped into:
  - Common Pottery
  - Green-Glazed Pottery
  - Bones
  - Metal Objects
  - Glass
  - Special Findings
- Items were stored in bags based on excavation layers





## Cleaning Finds

- Pottery, bones, glass, and special findings were washed using:
  - Water, soft brushes, and wooden sticks
- Metal objects were not washed to prevent corrosion

## Labelling

- Clear nail polish applied as a protective layer
- Signature label included campaign name, bag number, and date
- Second coat of clear nail polish to seal the label









# Special Finds



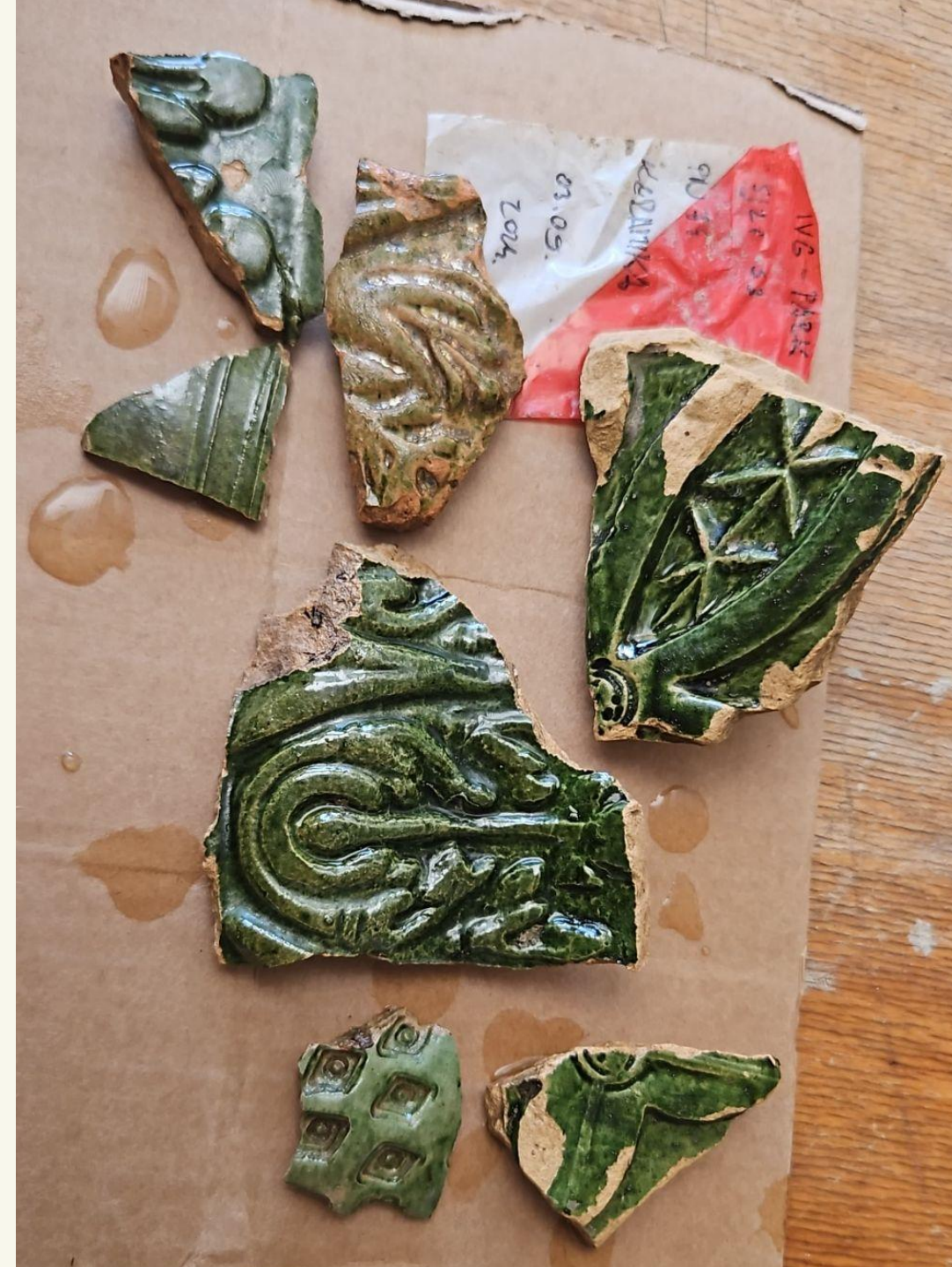
- Rarer
- Especially detailed
- Clues to dating





# Special Finds: Furnace

- Many pieces of furnace
- Green-glazed (made with lead) with intricate designs
- Typical of the Medieval and New Age eras
- Furnaces in some areas of Croatia: angels, saints, and human/religious figures; but here: vegetation represented, like plants and flowers





# Special Finds: 3 Kreuzer Coin

- One coin
- Especially useful find: can indicate the period
- Likely from the beginning of the 18th century





# Future Steps

- Trench covered with geotextile – leaves option to excavate further in future
- Further research by museum team into finds
- Artefacts can form part of future interpretation and exhibitions







Hvala!

Any Questions?

By Xin Chen, Helen Crutcher, Elisa Quintero Colmenero,  
Pratamanita Widi Rahayu, Pascale Richardson-Haughey, Shramana  
Saha, and Anna Sebescan